

MASKING PLUGS

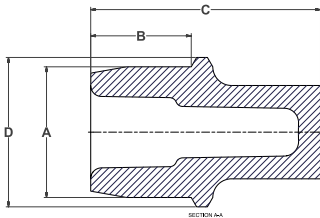
ULTRABAKE™ THREAD MASK 600°F (315°C)



- Recommended for Powder Coating and E-coating
- Designed to mask the first thread of a threaded hole
- Sizes for metric and UNC threads
- Hollow design cools quickly for ease of removal
- Tapered to prevent liquid trapping

Part Number	Color	Imperial (in)				Quantity Per Bag
		A	B	C	D	
UTM-1/4-20	YELLOW	0.218	0.200	0.450	0.260	500
		5.54	5.08	11.43	6.60	
UTM-5/16-18	LIGHT GREEN	0.278	0.200	0.500	0.320	500
		7.06	5.08	12.70	8.13	
UTM-3/8-16	WHITE	0.336	0.250	0.600	0.385	500
		8.53	6.35	15.24	9.78	
UTM-1/2-13	CLEAR	0.451	0.350	0.750	0.510	250
		9.96	8.89	19.05	11.18	
UTM-7/16-14	PINK	0.392	0.350	0.750	0.440	250
		11.46	8.89	19.05	12.95	
UTM-M6*1	CLEAR	0.208	0.197	0.551	0.248	500
		5.28	5.00	14.00	6.30	
UTM-M8*1.25	DARK BLUE	0.283	0.197	0.482	0.331	500
		7.19	5.00	12.24	8.41	
UTM-M10*1.5	PINK	0.358	0.276	0.630	0.409	250
		9.09	7.01	16.00	10.39	
UTM-M12*1.75	RUSTY RED	0.426	0.346	0.792	0.489	250
		10.82	8.79	20.12	12.42	
UTM-M16*2	LIGHT GREEN	0.583	0.433	0.906	0.654	100
		14.81	11.00	23.01	16.61	
UTM-M20*2.5	YELLOW	0.724	0.512	1.122	0.811	100
		18.39	13.00	28.50	20.60	

ULTRABAKE™ THREAD MASK LS 600°F (315°C)



- LS (Long Series) have longer handles for hard to reach areas
- Longer sealing area

Part Number	Color	Imperial (in)				Quantity Per Bag
		A	B	C	D	
UTM-1/4-20LS	YELLOW	0.218	0.279	0.922	0.260	500
		5.54	7.09	23.42	6.60	
UTM-1/4-36LS	DARK BLUE	0.232	0.270	0.922	0.260	500
		5.54	6.86	23.42	6.60	
UTM-5/16-18LS	LIGHT GREEN	0.278	0.279	0.894	0.320	500
		7.06	7.09	22.71	8.13	
UTM-5/16-40LS	RUSTY RED	0.296	0.279	0.894	0.320	250
		7.06	7.09	22.71	8.13	
UTM-3/8-16LS	WHITE	0.336	0.329	0.994	0.385	250
		8.53	8.36	25.25	9.78	
UTM-3/8-36LS	YELLOW	0.357	0.329	0.994	0.385	250
		8.53	8.36	25.25	9.78	
UTM-M3*0.5LS	RED	0.107	0.210	0.820	0.138	1000
		2.72	5.33	20.83	3.51	
UTM-M4*0.7LS	PINK	0.141	0.230	0.860	0.161	1000
		3.59	5.84	21.84	4.09	
UTM-M5*0.8LS	PURPLE	0.178	0.220	0.820	0.207	500
		4.52	5.59	20.83	5.26	
UTM-M6*1LS	CLEAR	0.208	0.295	0.964	0.248	500
		5.28	7.49	24.49	6.30	
UTM-M8*1.25LS	DARK BLUE	0.283	0.295	0.896	0.331	500
		7.19	7.49	22.76	8.41	
UTM-M10*1.5LS	PINK	0.358	0.276	0.945	0.409	250
		9.09	7.01	24.00	10.39	
UTM-M24*2LS	GREY	0.896	0.630	1.490	0.947	50
		22.76	16.00	37.85	24.05	