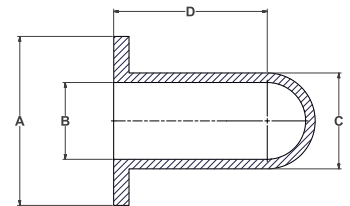


ULTRABAKE™ WASHER CAPS

600°F (315°C)

Part Number	Color	Thread	Imperial (in)				Quantity Per Bag
			A	B	C	D	
WC125-0500	CLEAR		0.500	0.125	0.260	1.000	500
			12.70	3.18	6.60	25.40	
WC156-0500	CLEAR		0.500	0.156	0.320	1.000	500
			12.70	3.96	8.13	25.40	
WC172-0500	CLEAR		0.500	0.172	0.385	1.000	500
			12.70	4.37	9.78	25.40	
WC027-012	LIGHT GREEN	M3	0.472	0.106	0.244	1.000	500
			12.00	2.69	6.20	25.40	
WC037-012	PINK	M4	0.472	0.146	0.264	1.000	500
			12.00	3.70	6.70	25.40	
WC046-015	CLEAR	M5	0.591	0.181	0.323	1.000	500
			15.00	4.60	8.20	25.40	
WC056-015	RED	M6	0.591	0.220	0.343	1.000	500
			15.00	5.59	8.71	25.40	
WC075-018	BLACK	M8	0.709	0.295	0.421	1.000	250
			18.00	7.50	10.70	25.40	
WC095-018	YELLOW	M10	0.820	0.374	0.500	1.500	250
			20.83	9.50	12.70	38.10	
WC115-025	CLEAR	M12	25.00	11.50	16.69	38.10	250
			25.00	11.50	16.69	38.10	
WC155-031	PURPLE	M16	1.220	0.610	0.815	1.500	250
			31.00	15.50	20.70	38.10	
WC195-038	GREY	M20	1.496	0.768	0.972	1.500	250
			38.00	19.50	24.69	38.10	

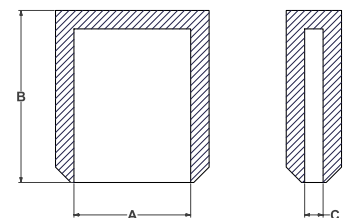


- Recommended for Powder Coating, E-Coating, Plating and Anodizing
- Provides a concentric mask around a stud
- May be used as a cap or plug

ULTRABAKE™ GROUNDING CAPS

600°F (315°C)

Part Number	Color	Imperial (in)			Quantity Per Bag
		A	B	C	
SRC-1	CLEAR	0.248	0.394	0.030	1000
		6.30	11.58	0.76	
SRC-2	RUSTY RED	0.248	0.456	0.030	1000
		11.94	9.50	1.02	
SRC-3	CLEAR	0.470	0.374	0.040	1000
		11.68	7.11	0.89	
SRC-4	YELLOW	0.460	0.280	0.035	1000
		12.45	17.45	1.19	
SRC-5	PINK	0.490	0.687	0.047	1000
		12.45	17.45	1.19	



- Ideal for masking grounding tabs