

THE
PACIFIC
PACIFIC HEIGHTS

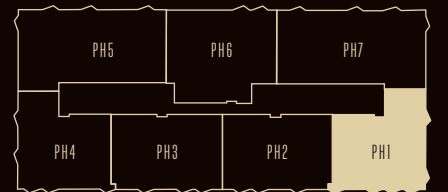
PH1

PENTHOUSE

2,175

APPROXIMATE SQUARE FOOTAGE

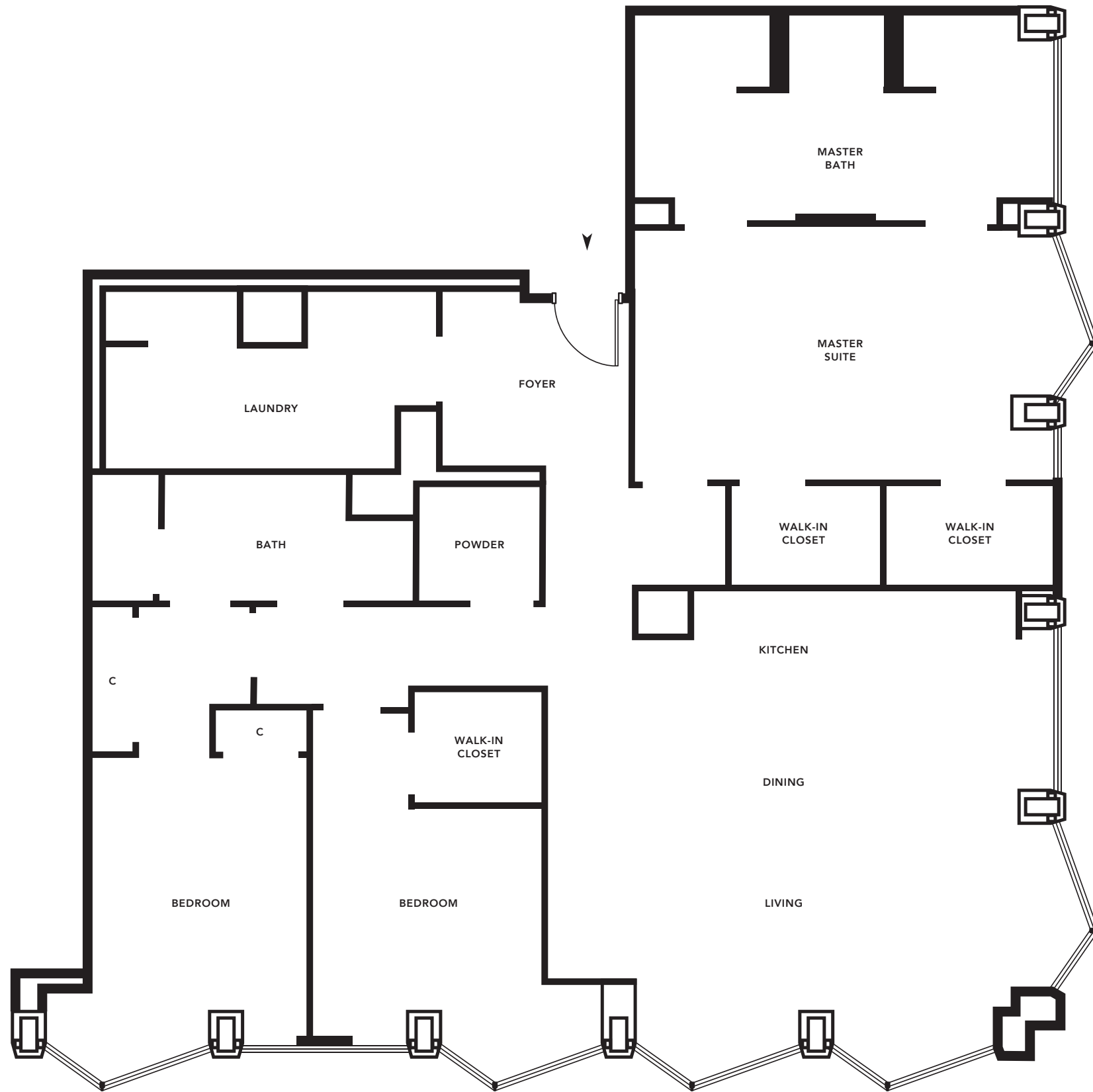
3 BED / 2.5 BATH



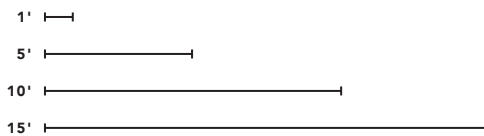
WARM SHELL

2121 WEBSTER STREET
SAN FRANCISCO, CALIFORNIA 94115

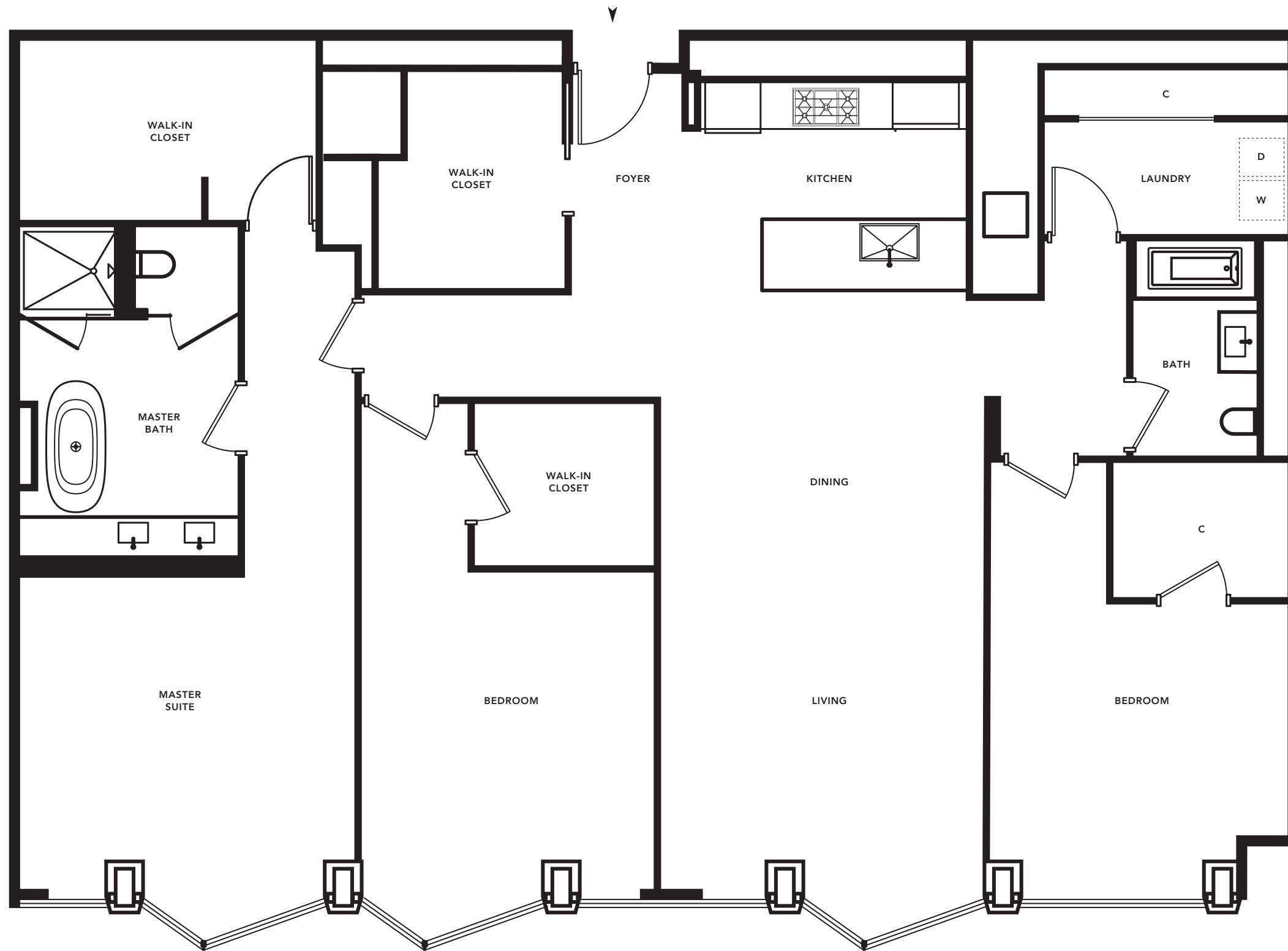
THEPACIFICHEIGHTS.COM
415 928 2121



Plan not to scale. Trumark Urban and The Pacific reserve the right to make modifications in plans, exterior designs, prices, materials, specifications, finishes and standard features at any time without notice. Photographs, renderings and landscaping are illustrative and conceptual. All artist's renderings are for representational purposes only and subject to variances. Windows and floor plans vary per residence, elevation and type. Square footage is approximate and should not be relied upon as a representation, express or implied. Penthouses shown will be delivered pre-build and plumbing-ready to allow for custom configuration. The above floor plan is for illustrative purposes only. Please inquire for details. All rights reserved. Real estate consulting, sales and marketing by Polaris Pacific. A licensed California, Arizona, Colorado, Oregon and Washington broker—CA BRE #01499250. ©2016 The Pacific. Brokers must accompany their client(s) and register them on their first appointment in order to be eligible for a broker commission.



SOUTH-EAST VIEWS



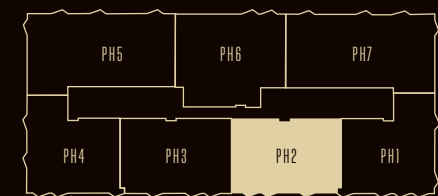
THE
PACIFIC
PACIFIC HEIGHTS

PH2

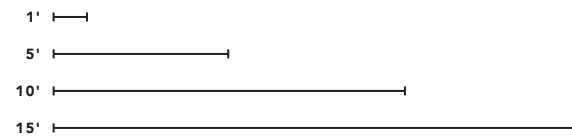
PENTHOUSE

2,172
APPROXIMATE SQUARE FOOTAGE

3 BED / 2 BATH



Plan not to scale. Trumark Urban and The Pacific reserve the right to make modifications in plans, exterior designs, prices, materials, specifications, finishes and standard features at any time without notice. Photographs, renderings and landscaping are illustrative and conceptual. All artist's renderings are for representational purposes only and subject to variances. Windows and floor plans vary per residence, elevation and type. Square footage is approximate and should not be relied upon as a representation, express or implied. The above floor plan is for illustrative purposes only. Please inquire for details. All rights reserved. Real estate consulting, sales and marketing by Polaris Pacific. A licensed California, Arizona, Colorado, Oregon and Washington broker—CA BRE #01499250. ©2016 The Pacific. Brokers must accompany their client(s) and register them on their first appointment in order to be eligible for a broker commission.



SOUTH-EAST VIEWS

2121 WEBSTER STREET
SAN FRANCISCO, CALIFORNIA 94115

THEPACIFICHEIGHTS.COM
415 928 2121



THE
PACIFIC
 PACIFIC HEIGHTS

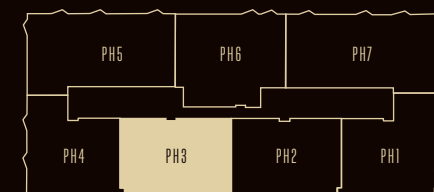
PH3

PENTHOUSE

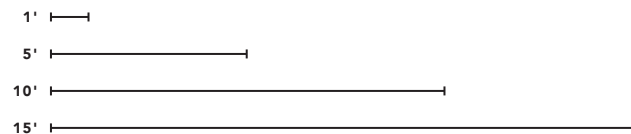
2,207

APPROXIMATE SQUARE FOOTAGE

3 BED / 3 BATH



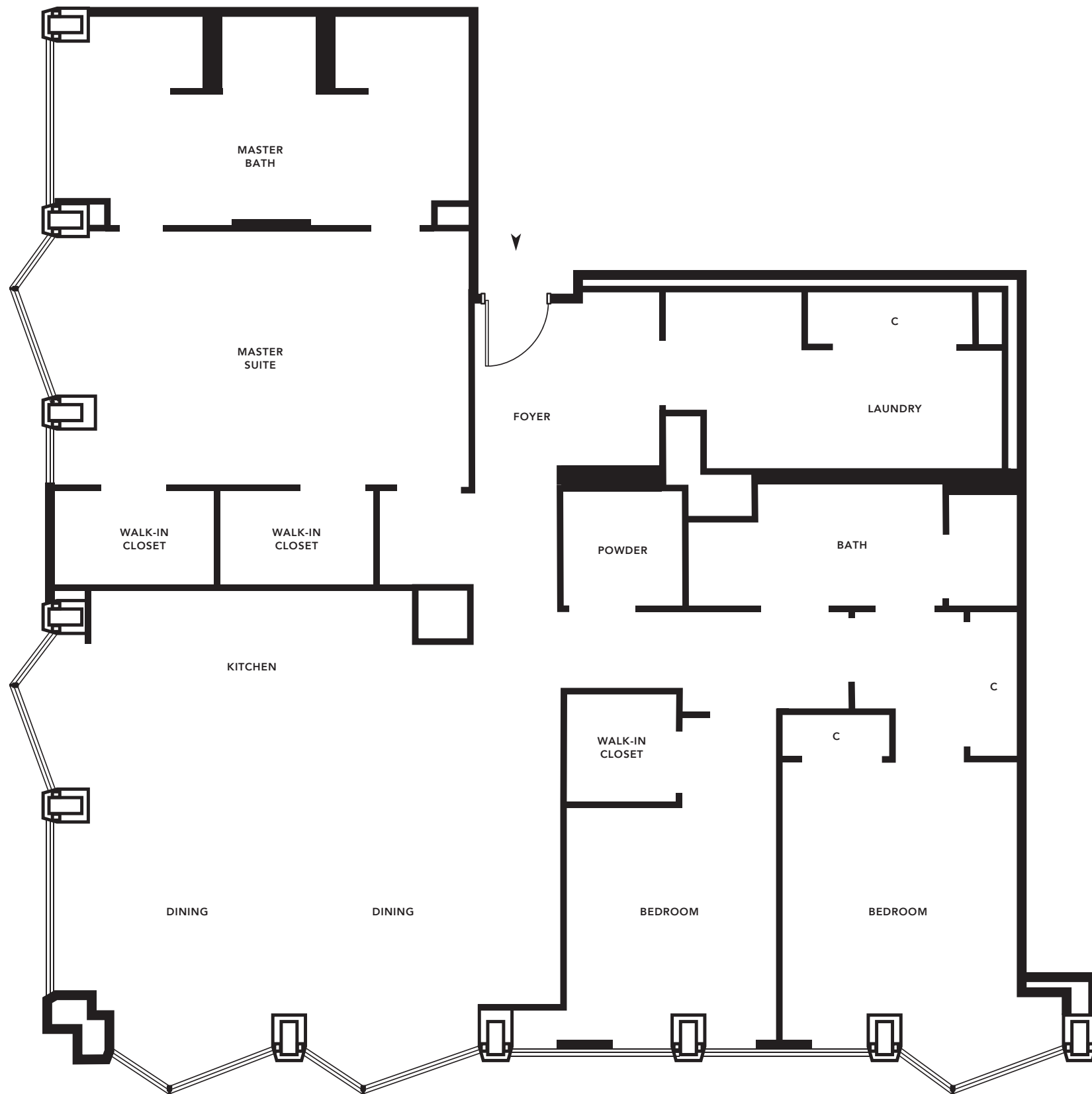
Plan not to scale. Trumark Urban and The Pacific reserve the right to make modifications in plans, exterior designs, prices, materials, specifications, finishes and standard features at any time without notice. Photographs, renderings and landscaping are illustrative and conceptual. All artist's renderings are for representational purposes only and subject to variances. Windows and floor plans vary per residence, elevation and type. Square footage is approximate and should not be relied upon as a representation, express or implied. The above floor plan is for illustrative purposes only. Please inquire for details. All rights reserved. Real estate consulting, sales and marketing by Polaris Pacific. A licensed California, Arizona, Colorado, Oregon and Washington broker—CA BRE #01499250. ©2016 The Pacific. Brokers must accompany their client(s) and register them on their first appointment in order to be eligible for a broker commission.



SOUTH-WEST VIEWS

2121 WEBSTER STREET
 SAN FRANCISCO, CALIFORNIA 94115

THEPACIFICHEIGHTS.COM
 415 928 2121



THE
PACIFIC
 PACIFIC HEIGHTS

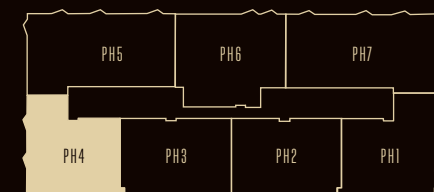
PH4

PENTHOUSE

2,139

APPROXIMATE SQUARE FOOTAGE

3 BED / 2.5 BATH

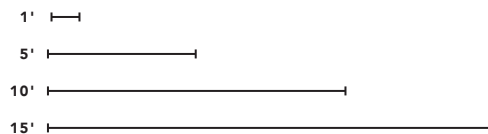


WARM SHELL

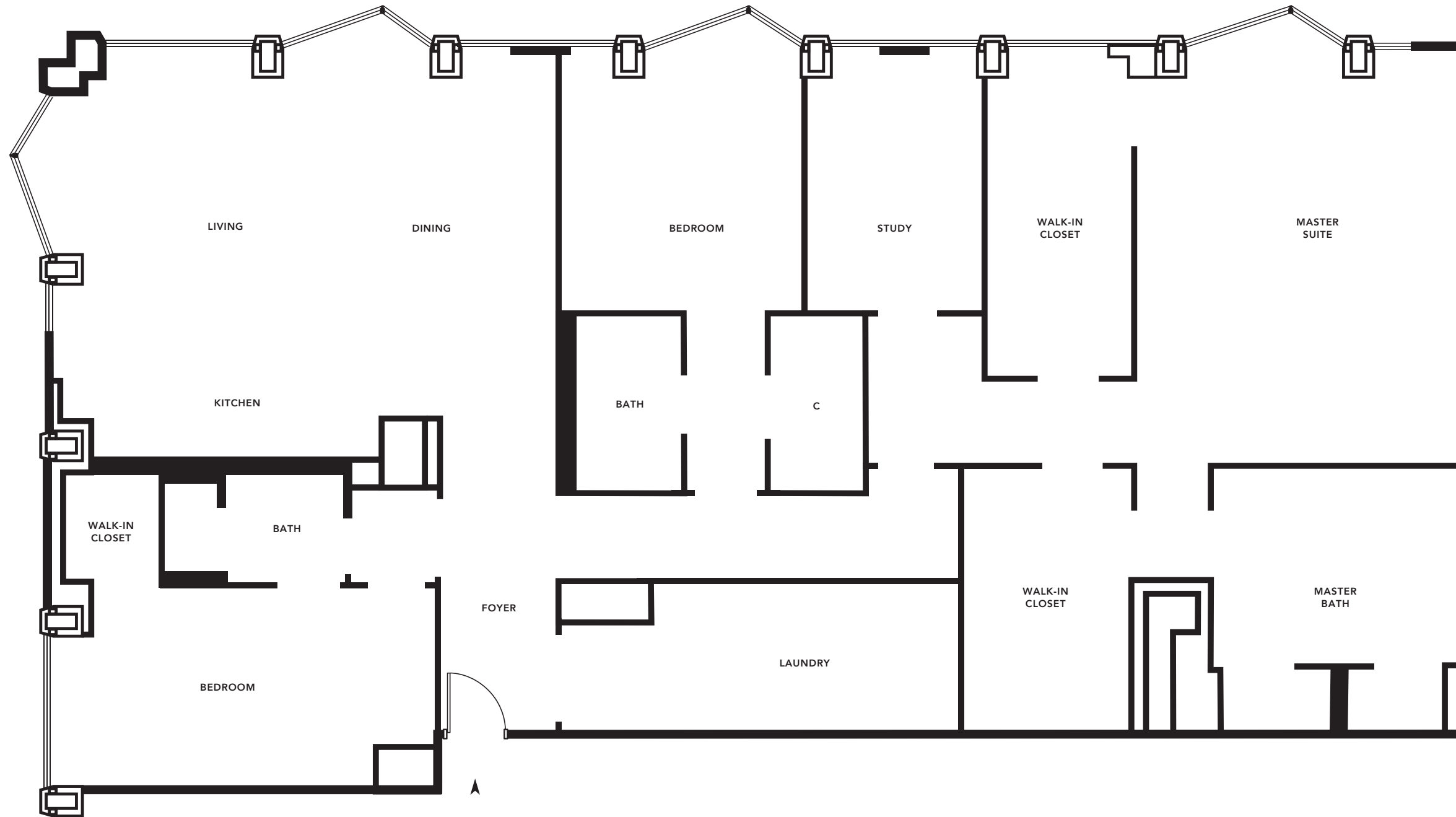
2121 WEBSTER STREET
 SAN FRANCISCO, CALIFORNIA 94115

THEPACIFICHEIGHTS.COM
 415 928 2121

Plan not to scale. Trumark Urban and The Pacific reserve the right to make modifications in plans, exterior designs, prices, materials, specifications, finishes and standard features at any time without notice. Photographs, renderings and landscaping are illustrative and conceptual. All artist's renderings are for representational purposes only and subject to variances. Windows and floor plans vary per residence, elevation and type. Square footage is approximate and should not be relied upon as a representation, express or implied. Penthouses shown will be delivered pre-build and plumbing-ready to allow for custom configuration. The above floor plan is for illustrative purposes only. Please inquire for details. All rights reserved. Real estate consulting, sales and marketing by Polaris Pacific. A licensed California, Arizona, Colorado, Oregon and Washington broker—CA BRE #01499250. ©2016 The Pacific. Brokers must accompany their client(s) and register them on their first appointment in order to be eligible for a broker commission.



SOUTH-WEST VIEWS



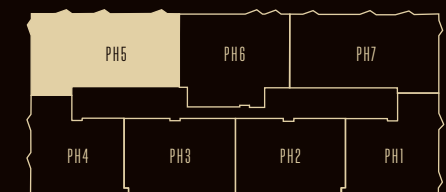
THE
PACIFIC
 PACIFIC HEIGHTS

PH5

PENTHOUSE

3,073
 APPROXIMATE SQUARE FOOTAGE

3 BED + STUDY / 3 BATH

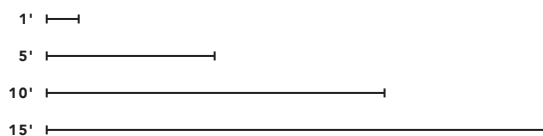


WARM SHELL

2121 WEBSTER STREET
 SAN FRANCISCO, CALIFORNIA 94115

THEPACIFICHEIGHTS.COM
 415 928 2121

Plan not to scale. Trumark Urban and The Pacific reserve the right to make modifications in plans, exterior designs, prices, materials, specifications, finishes and standard features at any time without notice. Photographs, renderings and landscaping are illustrative and conceptual. All artist's renderings are for representational purposes only and subject to variances. Windows and floor plans vary per residence, elevation and type. Square footage is approximate and should not be relied upon as a representation, express or implied. Penthouses shown will be delivered pre-build and plumbing-ready to allow for custom configuration. The above floor plan is for illustrative purposes only. Please inquire for details. All rights reserved. Real estate consulting, sales and marketing by Polaris Pacific. A licensed California, Arizona, Colorado, Oregon and Washington broker—CA BRE #01499250. ©2016 The Pacific. Brokers must accompany their client(s) and register them on their first appointment in order to be eligible for a broker commission.



NORTH-WEST VIEWS

THE
PACIFIC
PACIFIC HEIGHTS

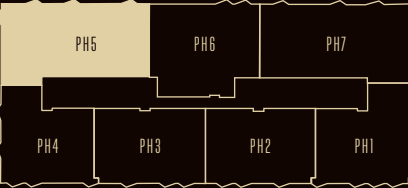
PH5

PENTHOUSE

3,073

APPROXIMATE SQUARE FOOTAGE

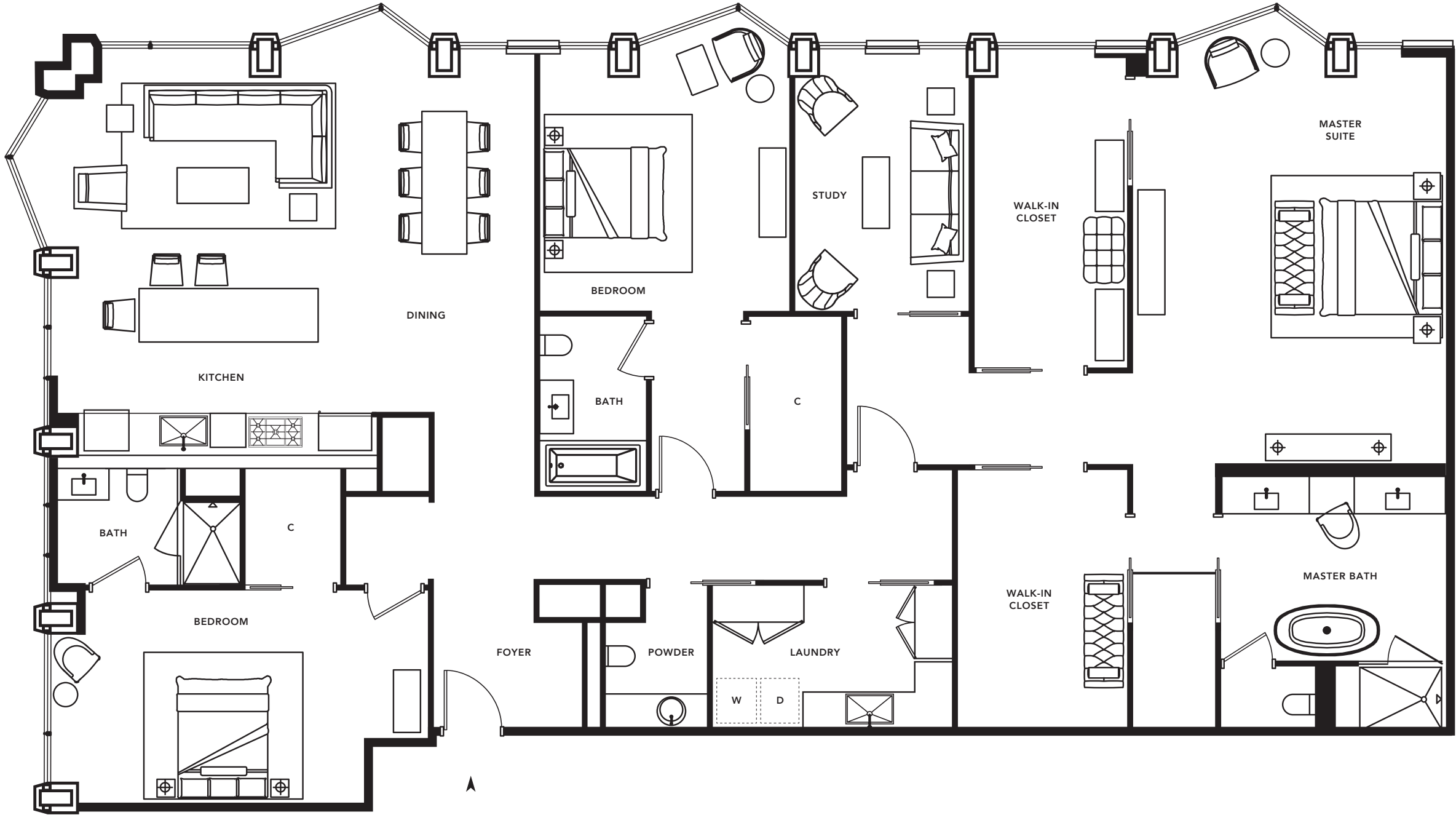
3 BED + STUDY / 3.5 BATH



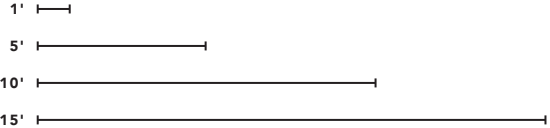
CONCEPTUAL FLOOR PLAN

2121 WEBSTER STREET
SAN FRANCISCO, CALIFORNIA 94115

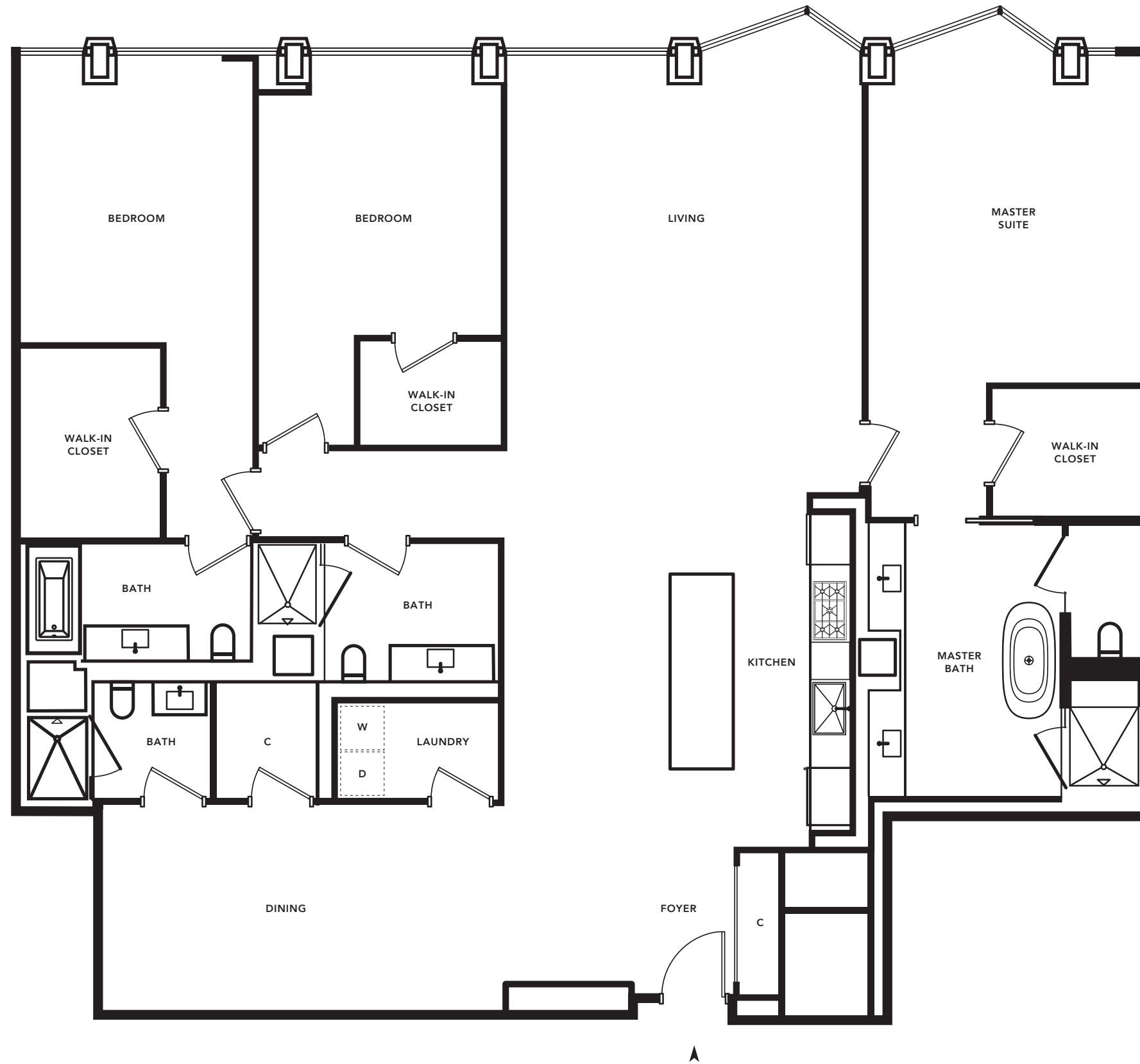
THEPACIFICHEIGHTS.COM
415 928 2121



Plan not to scale. Trumark Urban and The Pacific reserve the right to make modifications in plans, exterior designs, prices, materials, specifications, finishes and standard features at any time without notice. Photographs, renderings and landscaping are illustrative and conceptual. All artist's renderings are for representational purposes only and subject to variances. Windows and floor plans vary per residence, elevation and type. Square footage is approximate and should not be relied upon as a representation, express or implied. Penthouses shown will be delivered pre-build and plumbing-ready to allow for custom configuration. The above floor plan is for illustrative purposes only. Please inquire for details. All rights reserved. Real estate consulting, sales and marketing by Polaris Pacific. A licensed California, Arizona, Colorado, Oregon and Washington broker—CA BRE #01499250. ©2016 The Pacific. Brokers must accompany their client(s) and register them on their first appointment in order to be eligible for a broker commission.



NORTH-WEST VIEWS



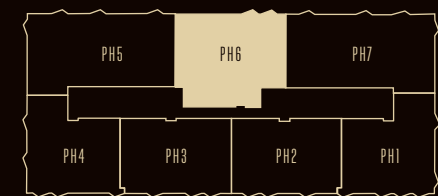
THE
PACIFIC
 PACIFIC HEIGHTS

PH6

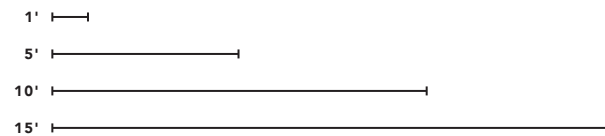
PENTHOUSE

2,584
 APPROXIMATE SQUARE FOOTAGE

3 BED / 4 BATH



Plan not to scale. Trumark Urban and The Pacific reserve the right to make modifications in plans, exterior designs, prices, materials, specifications, finishes and standard features at any time without notice. Photographs, renderings and landscaping are illustrative and conceptual. All artist's renderings are for representational purposes only and subject to variances. Windows and floor plans vary per residence, elevation and type. Square footage is approximate and should not be relied upon as a representation, express or implied. The above floor plan is for illustrative purposes only. Please inquire for details. All rights reserved. Real estate consulting, sales and marketing by Polaris Pacific. A licensed California, Arizona, Colorado, Oregon and Washington broker—CA BRE #01499250. ©2016 The Pacific. Brokers must accompany their client(s) and register them on their first appointment in order to be eligible for a broker commission.



NORTH VIEWS

2121 WEBSTER STREET
 SAN FRANCISCO, CALIFORNIA 94115

THEPACIFICHEIGHTS.COM
 415 928 2121

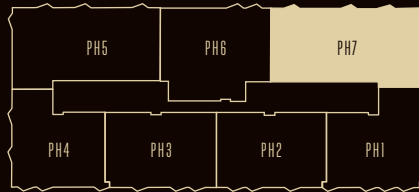
THE
PACIFIC
 PACIFIC HEIGHTS

PH7

PENTHOUSE

3,031
 APPROXIMATE SQUARE FOOTAGE

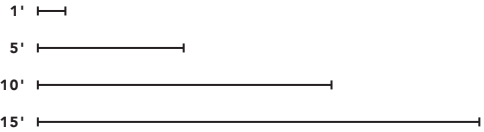
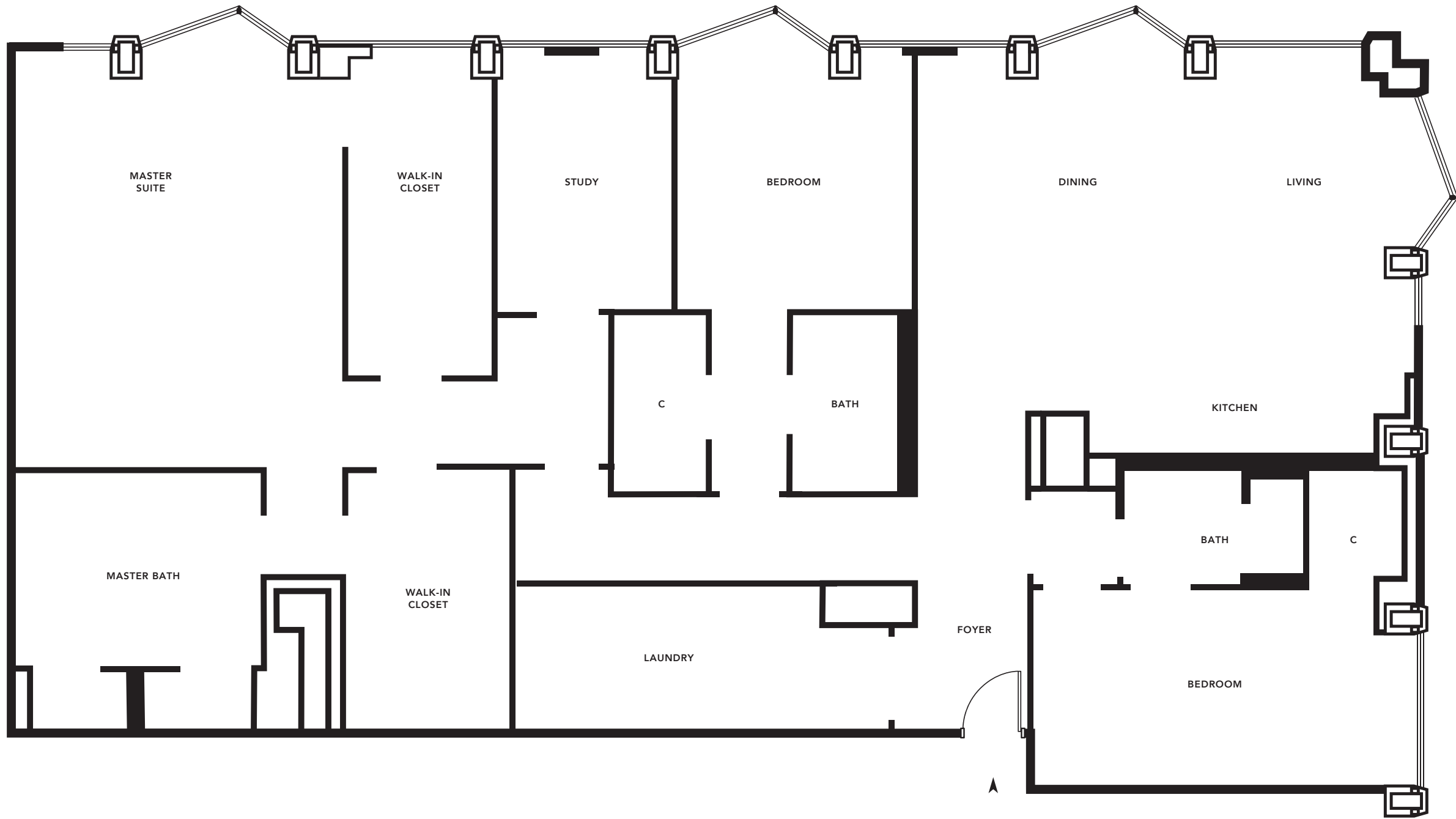
3 BED + STUDY / 3 BATH



WARM SHELL

2121 WEBSTER STREET
 SAN FRANCISCO, CALIFORNIA 94115

THEPACIFICHEIGHTS.COM
 415 928 2121



NORTH-EAST VIEWS

Plan not to scale. Trumark Urban and The Pacific reserve the right to make modifications in plans, exterior designs, prices, materials, specifications, finishes and standard features at any time without notice. Photographs, renderings and landscaping are illustrative and conceptual. All artist's renderings are for representational purposes only and subject to variances. Windows and floor plans vary per residence, elevation and type. Square footage is approximate and should not be relied upon as a representation, express or implied. Penthouses shown will be delivered pre-build and plumbing-ready to allow for custom configuration. The above floor plan is for illustrative purposes only. Please inquire for details. All rights reserved. Real estate consulting, sales and marketing by Polaris Pacific. A licensed California, Arizona, Colorado, Oregon and Washington broker—CA BRE #01499250. ©2016 The Pacific. Brokers must accompany their client(s) and register them on their first appointment in order to be eligible for a broker commission.